

## Fixing aids

Correct fixing is essential if FSB lever handle furniture is to function flawlessly.

It is FSB policy to enclose paper positioning templates with all orders. Should these have been omitted, we would ask you to inform us immediately and we will rectify the matter. Product codes are given in the footers of the pages that follow.

FSB supplies trade installers with metal templates, the product codes for which are quoted towards the top of the right-hand column in the pages that follow.

A fair amount of force is involved in the operation of lever handle furniture. This holds particularly true for fittings on heavily used doors. Long-term trouble-free use can only be guaranteed if sufficient care is taken when marking out and boring holes and fixing the furniture.

FSB has looked very carefully into the complaints received over recent years. In the process, it has discovered that the source of the problem is very frequently faulty fixing. Here are a few typical examples:

- Lugs on backplates and roses simply pinched off. Non-slip attachment impossible as a result.
- Fittings ordered for wrong door thickness. Connecting spindle was either too long - lever handle began to move - or too short - spindle mounted too close to its end, leading to breakage.
- The grub screw punch was not tightened with sufficient care and hence the clamping plate was not pierced. The lever handle was slack on its spindle, which meant it could be wrenched loose if tugged with any force.
- Holes bored without using template. Centres marked out in haphazard manner, producing oversize holes and hence poorly anchored backplates and roses moved on the door.
- FSB furniture has been combined with spindles, screws, backplates and roses of competitors.

FSB is at pains to stress that it can only accept liability for its products - just as all competitors - if they have been correctly fixed.

We would additionally wish to draw attention to growing public sensitivity regarding the issue of liability. Improperly fitted door and window furniture can have dire consequences in this respect. FSB puts its faith in the practical experience and skill of its own clientele and of their customers. Our mutual end customers have a right to expect properly fitted hardware that works.

# Fixing aids

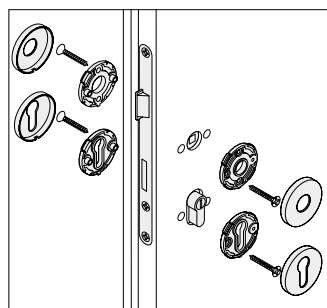
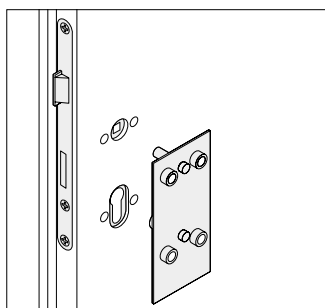
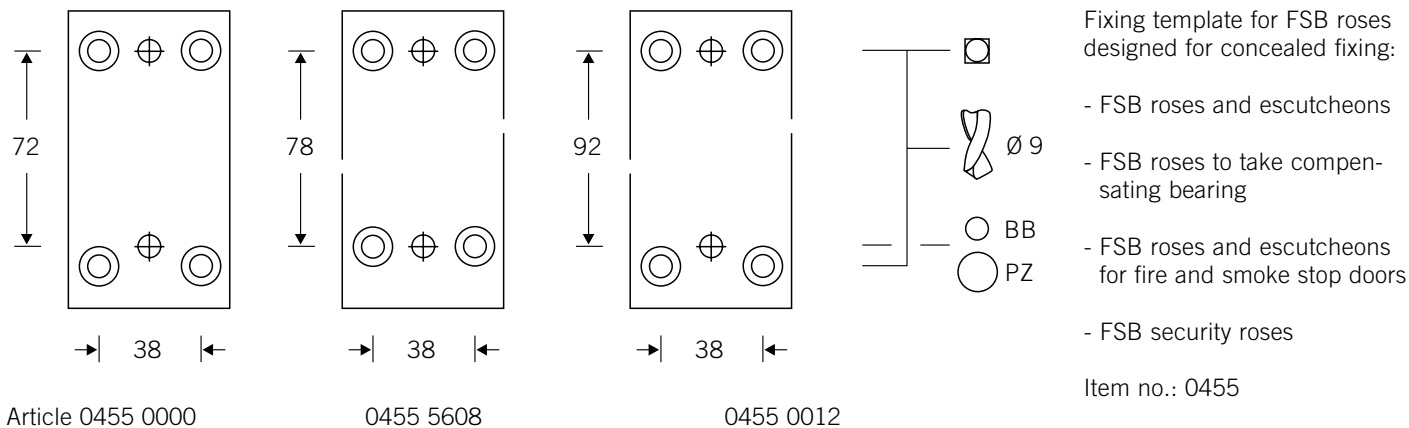
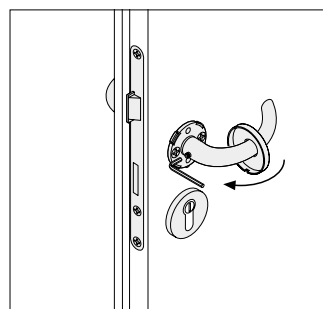
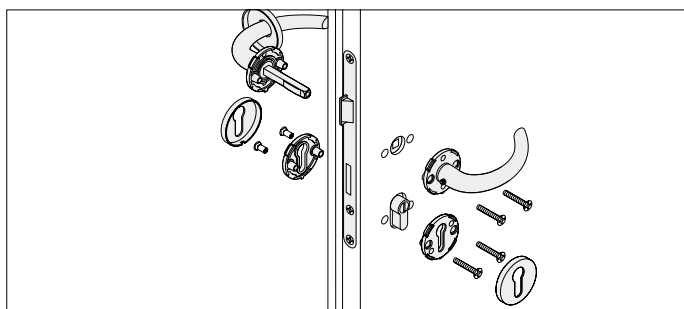


Illustration left:  
Fixing roses

Illustration middle:  
Fixing fire door furniture resp.  
furniture with compensating  
bearing

Pass template guide pins through follower and keyhole. Drill four recesses of 9 mm Ø through template bushings. Firmly press lugs of base roses into drilled recesses ensuring small rectangular plastic lip faces downwards. Then screw base roses together.

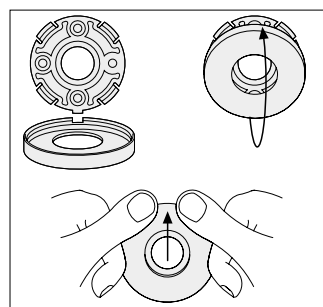
Cover roses are attached to their bases by applying a combination of downward and forward pressure whilst ensuring their rectangular notch slots over the plastic lip on the base. Should the furniture need to be removed, a screwdriver can be used to gently lever lip and notch apart.



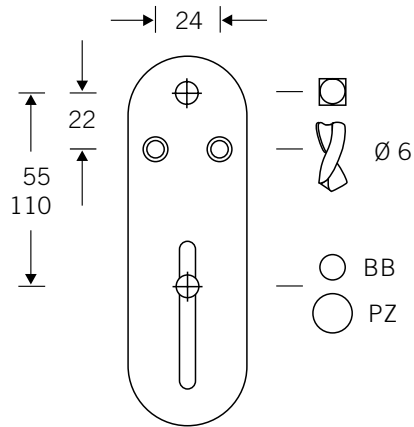
Paper template for FSB roses standard:  
Item no.: 8429 0201

Paper template for FSB fire door furniture resp. with compensating bearing  
Item no.: 8429 0204

Paper template for FSB roses WC standard:  
Item no.: 8429 0205

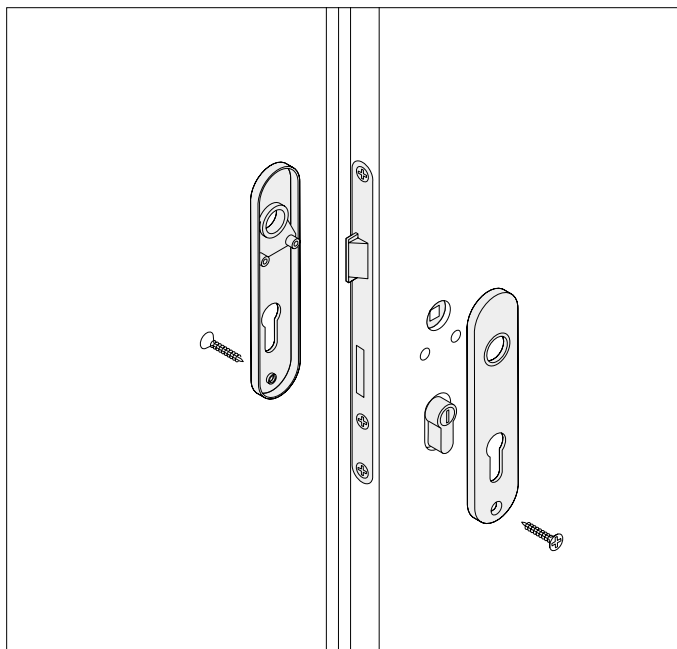
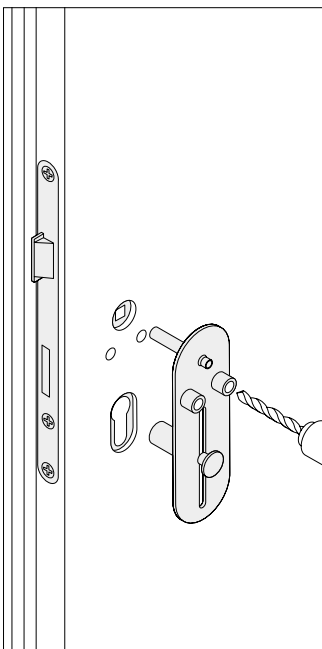


# Fixing aids



Fixing template for FSB standard short backplate, locating lugs and visible fixing

Item no.: 0453



The two guide pins of the fixing template are pressed into the follower hole and the keyhole:

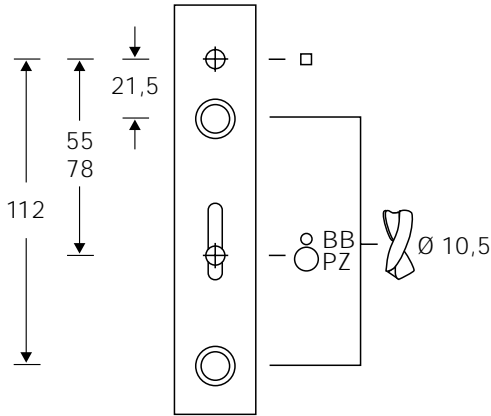
With FSB standard short backplates with two lugs, 6 mm Ø holes are bored through the two drilling bushes.

Firmly press the short backplate into position with lugs in drilled holes and secure with the screw.

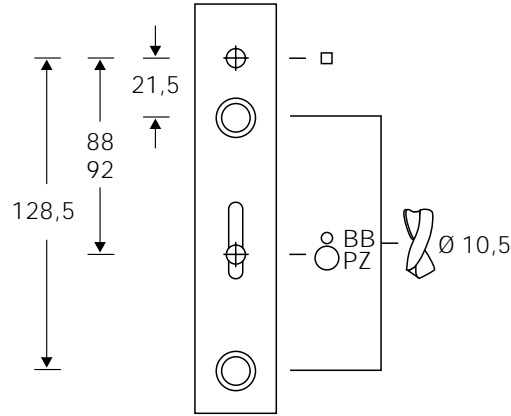
Paper template for FSB standard short backplate  
Item no.: 8429 0203

Paper template for FSB standard short WC backplate  
Item no.: 8429 0206

## Fixing aids



Item no.: 0477



Item no.: 0469

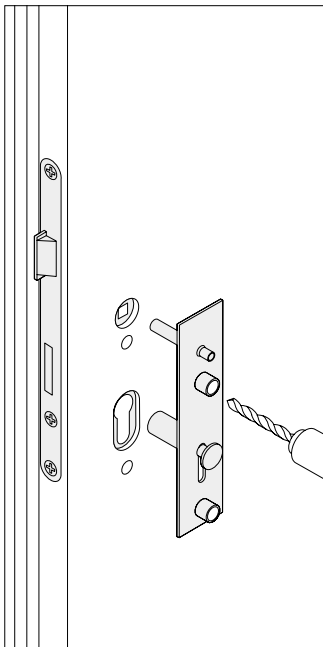
Fixing template for:

FSB backplates  
1450 03 and 1451 03  
- with concealed fixing  
- FSB sets for fire doors  
- FSB sets with compensating bearing.

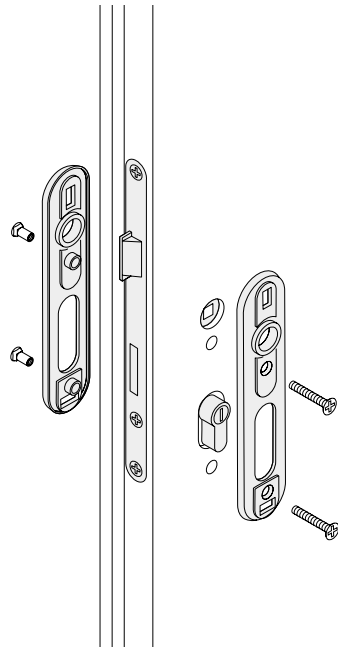
Item no.: 0477

FSB backplates  
1452 03 and 1453 03  
- with concealed fixing  
- FSB sets for fire doors  
- FSB sets with compensating bearing.

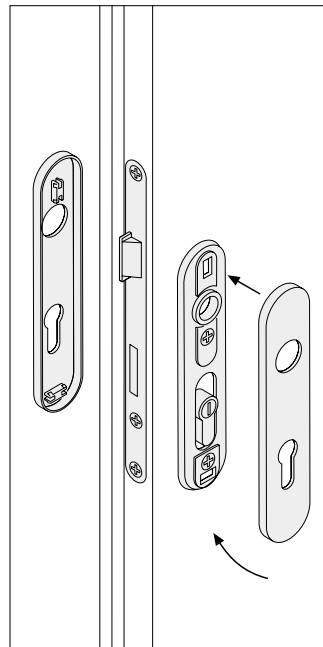
Item no.: 0469



Paper template for FSB short backplate with base  
Item no.: 8429 0202



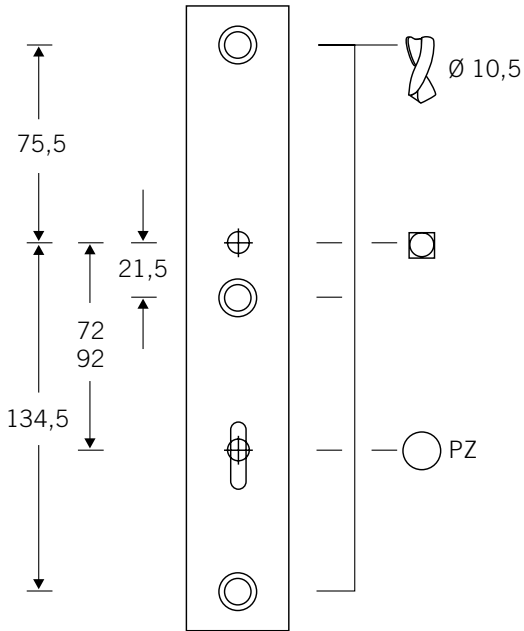
Paper template for FSB 1452 03 and 1453 03  
Item no.: 8429 0185



Paper template for FSB short WC backplate with base  
Item no.: 8429 0196

The two template guide pins are pressed into the follower hole and the keyhole. 10,5 mm Ø holes are bored through the two drilling bushes. Firmly press the baseplates into position with lugs in drilled holes. Secure the baseplates to each other with the screws. Then clip on the baseplate covers in the pressure direction 'diagonally forward'.

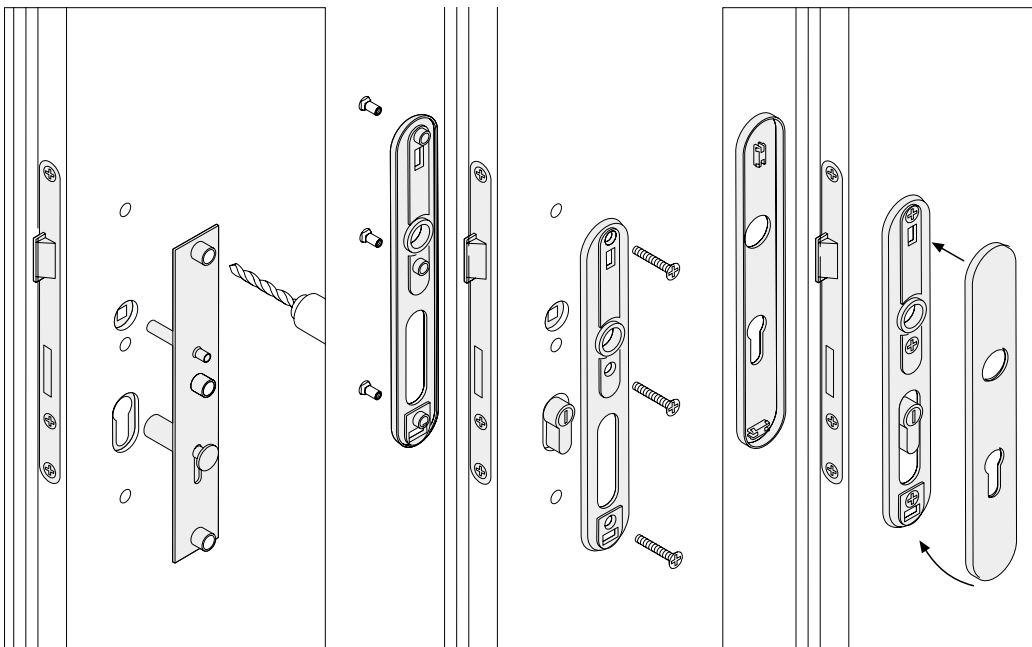
## Fixing aids



Fixing template for:

- FSB long backplates with concealed fixing
- FSB long backplate sets for fire doors
- FSB long backplate sets with compensating bearing
- FSB long backplate sets for framed doors FSB 7816 and 7820

Item no.: 0476

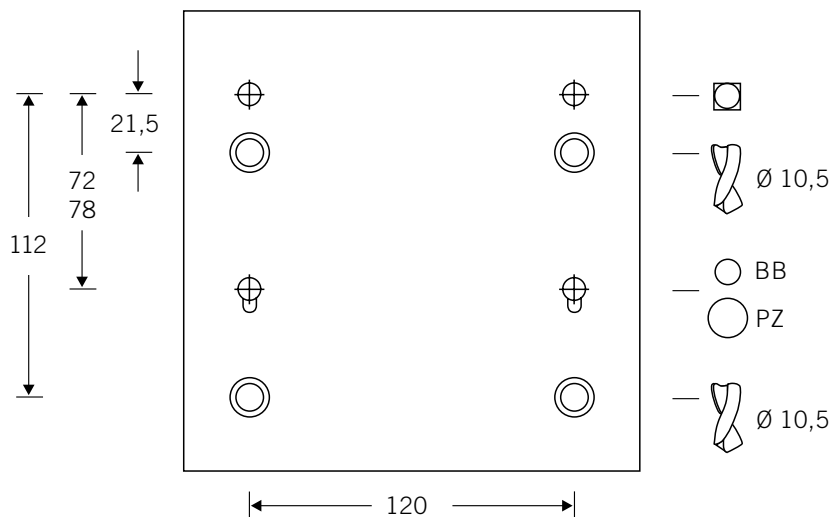


The two template guide pins are pressed into the follower hole and the keyhole. 10,5 mm  $\varnothing$  holes are bored through the three drilling bushes. Firmly press the baseplates into position with lugs in drilled holes. Secure the baseplates to each other with the screws. Then clip on the baseplate covers in the pressure direction 'diagonally forward'.

Paper template for FSB long backplates with base  
Item no.: 8429 0149

Paper template for FSB long WC backplates with base  
Item no.: 8429 0195

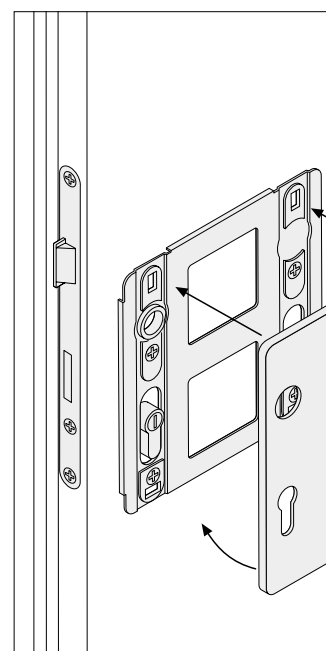
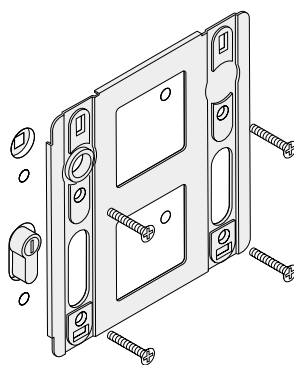
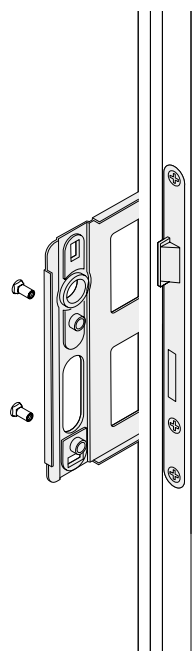
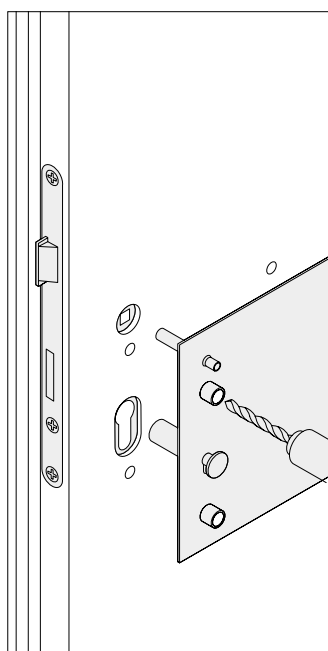
## Fixing aids



Fixing template for:

- FSB square backplates with concealed fixing
- FSB square backplate sets for fire doors
- FSB square backplate sets with compensating bearing

Item no.: 0478



Paper template for FSB broad backplate with base

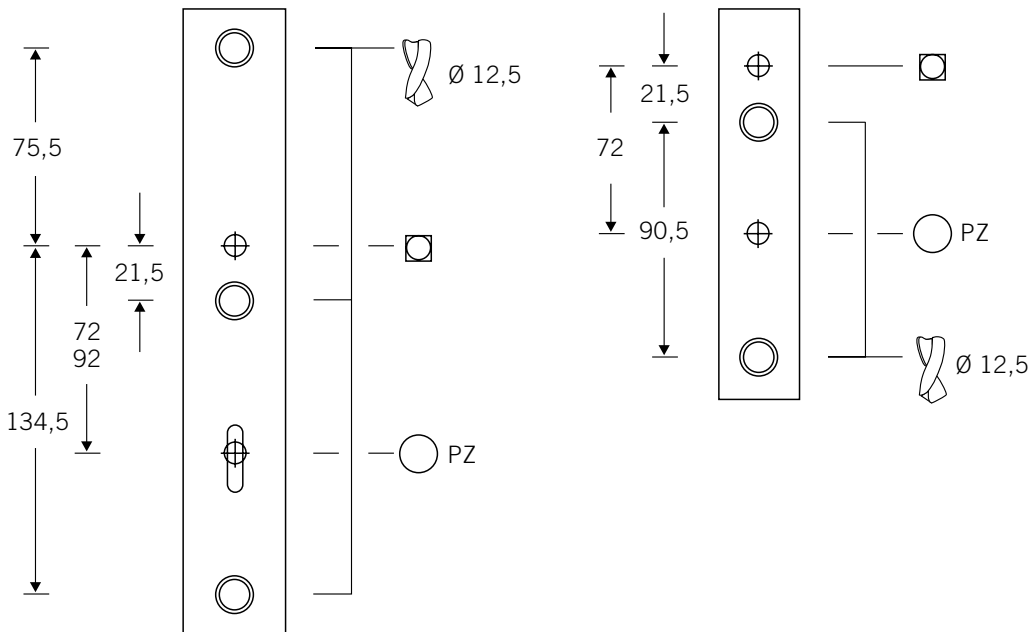
Item no.: 8429 0209

The two template guide pins are pressed into the follower hole and the keyhole. 10,5 mm Ø holes are bored through the four drilling bushes. By reversing the pins, the template can be used for both left and right hands.

Firmly press the baseplates into position with lugs in drilled holes. Secure the baseplates to each other with the screws.

Then clip on the baseplate covers in the pressure direction 'diagonally forward'.

# Fixing aids Design + security



Fixing template for:

- FSB security furniture long backplate version

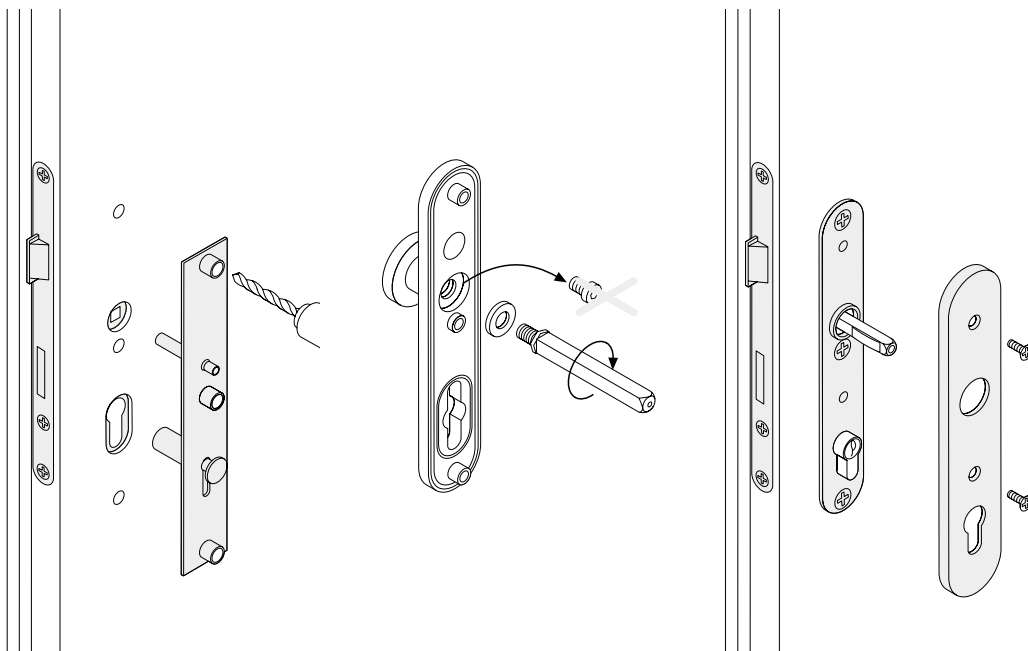
Item no. 0487

- FSB security furniture short backplate version

Item no. 0488

- FSB security furniture for framed-door-locks 'Securitas' FSB 7330 and 7531 FSB 7530 and 7531

Item no. 0476



Pass template guide pins through lock follower and key-hole, then bore holes for lugs through the drill bushings. In the case of FSB security furniture with a short backplate or with a long backplate 12,5 mm Ø holes, in case of FSB furniture for framed doors 10,5 mm Ø holes are drilled. Then firmly press outside backplates and lugs on inside into boreholes and fasten with screws from the inside.

Clip on inside cover plate and screw tight. Insert the female lever handle section and work in the punching screw until its head is flush with the surface of the handle.

Paper template for FSB security furniture long backplate version

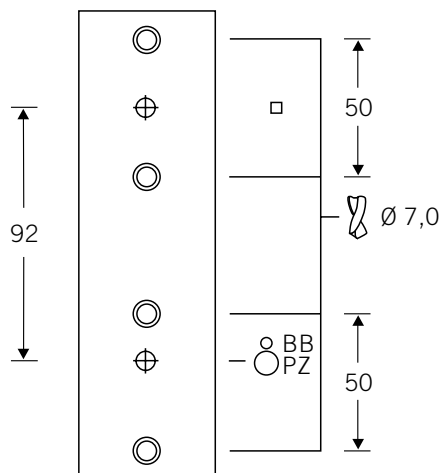
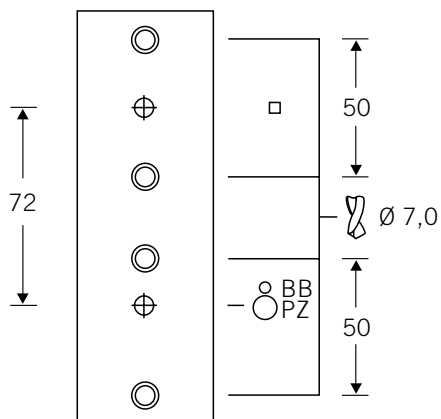
PZ 72 mm  
Item no.: 8429 0211

PZ 92 mm  
Item no.: 8429 0212

Paper template for FSB security furniture short backplate version

Item no.: 8429 0210

## Fixing aids

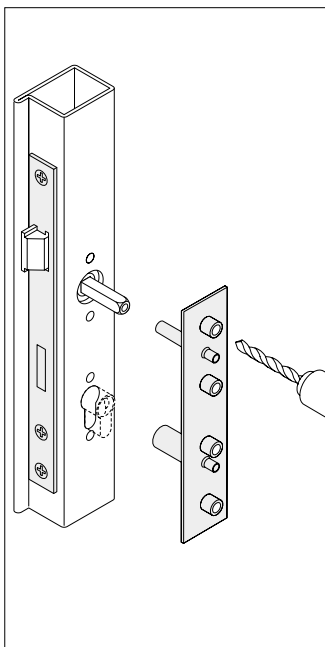


Fixing template for:

- FSB oval roses with rivet nuts for using FSB fixing accessories 0526

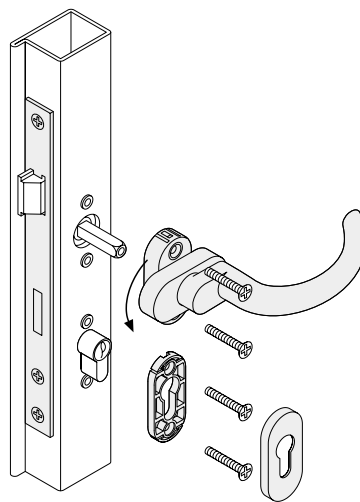
PZ 72 mm  
Item no.: 0481

PZ 92 mm  
Item no.: 0482



Paper template for oval roses with rivet nuts

PZ 72 and 92 mm  
Item no.: 8429 0208

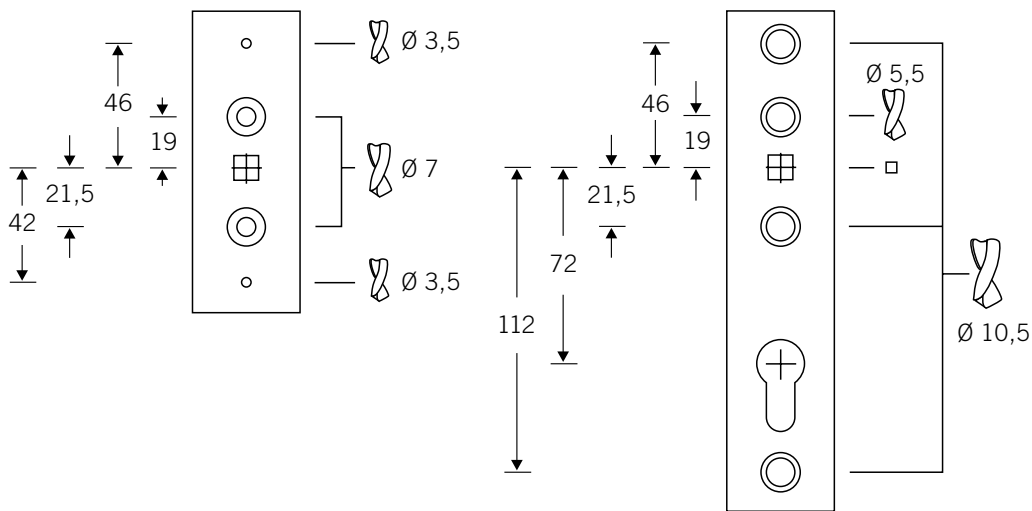


Pass template guide pins through lock follower and key-hole, then bore 7mm Ø holes for rivet nuts through the drill bushings. Repeat process on other side if necessary. Screw rivet nuts onto the threaded mandrel of riveting tool and fix the rivet nuts whilst working it.

Then fit the framed door furniture whilst fastening it with screws. Clip on the cover rose and fix the square spindle by tightening the punching screw in the neck of the handle.



# Fixing aids



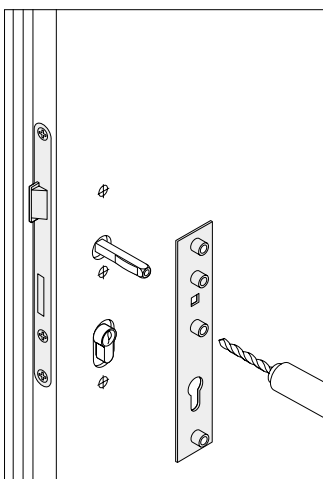
Fixing template for:

- FSB panic furniture  
7970 0110  
7970 0200

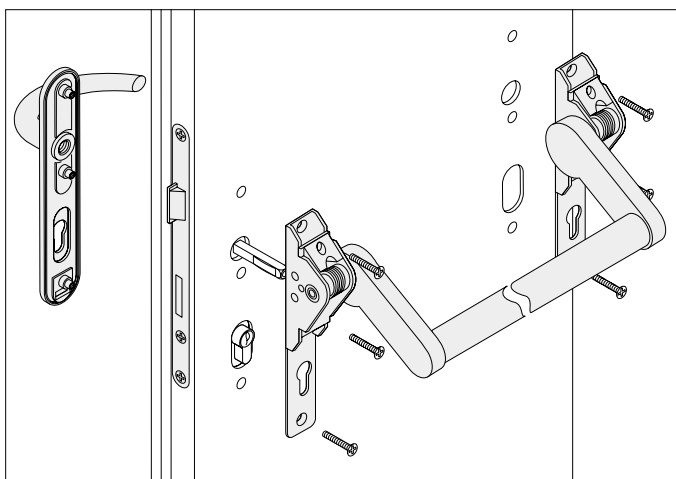
Item no.: 0457 6409

- FSB panic furniture  
7970 0300

Item no.: 0457 6609



Insert FSB special-purpose spindle  $\varnothing 125$  into lock and fit cylinder. Position borehole template over spindle and cylinder and drill through bushings.

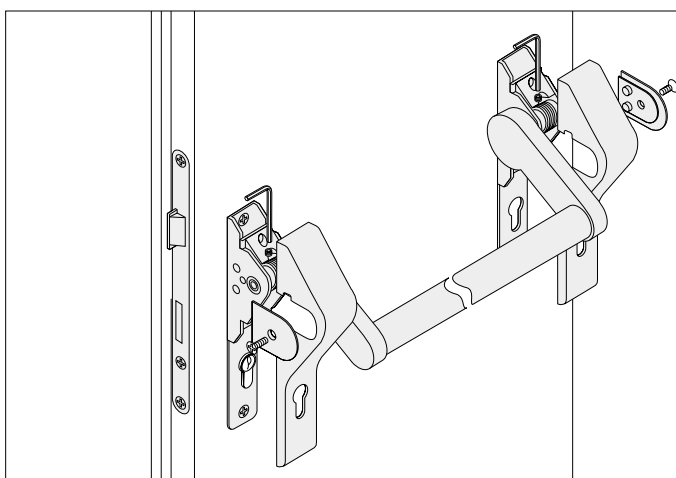


The crossbar length is arrived at by taking the width of the door and deducting the back-set twice and a further 67mm. Once bars have been cut to size, fit plastic end pieces for the stainless steel version.

Assembling panic furniture and integrating it with fittings on the other side is very straightforward. Full instructions are enclosed with each set.

Check the action of the furniture once the stop setting has been determined and covers have been fitted.

Paper template for  
FSB panic furniture  
Item no.: 8430 0085

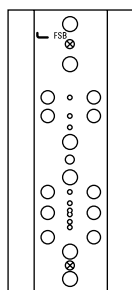


# Universal Template

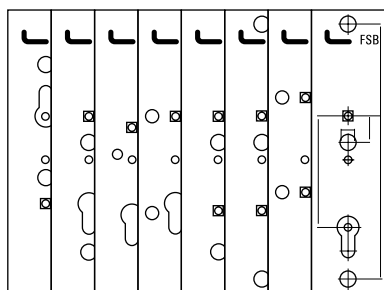


0460

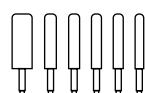
All FSB fittings have their own fixing templates for use as needed, but FSB has additionally developed a universal template that encompasses virtually every borehole configuration available. This all-purpose kit is a must for all professional fabricators.



1



2



3



4



5

Constituent parts:

- 1 Metal template
- 2 Borehole layout sheets
- 3 Pilot pins
- 4 Knurled screw
- 5 Drill bits

Instructions for use:

1. Select borehole layout required using paper sheets provided.
2. Push borehole layout sheet from above into the guide of metal template.
3. Firmly secure layout sheet with knurled screw.
4. Select pilot pins to suit lock-follower (7 mm, 8 mm, 9 mm, 10 mm) and keyway type (lever lock, PZ, dead-bolt follower) and screw them into the metal template from the back until they become visible in the borehole layout.
5. Attach the prepared universal template to each side of the door in turn and drill through the available layout holes.
6. Remove template and fit FSB furniture as shown in fixing instructions.