

Fittings for glass doors

9

Lever handle furniture for glass doors	447
Entrance door furniture for glass doors	448
Door knobs for glass doors	449 and 450

Fittings for glass doors

Over the past decade, glass doors have become an important design feature in both domestic and public-block construction. The builders hardware industry has adjusted to the task of designing the fittings to mount, operate, and lock such doors so they do not lessen the transparency of the glass. To an extent, the notion has been fostered that glass doors will only take special-purpose furniture. This is a little misleading. FSB, for instance, has found it possible to design nearly all its levers and knobs in such a way that they can be modified for use on glass doors.

Glass doors can be fitted with pull handles (cf. page 315ff.), lever handles for customised glass door locks or fixed door knobs.

Public buildings generally feature glass doors with tubular pull handles for added safety.

Instead of these large tubular handles, non-rotating door knobs can be deployed. 'Less is more', so they say, and dead knobs certainly look less conspicuous than their larger tubular counterparts. They suggest themselves as a design feature notably in the domestic sphere.

Lever handle furniture for glass doors

When deploying lever handle or entrance door furniture, there are two basic options to be considered:

Lever handles and door knobs without roses can be fitted straight onto the lock case.

Lever handles and door knobs with roses can be fitted onto glass door locks if these are suitably adapted.

In both cases, FSB can supply modified versions of all FSB models.

Both assembly options are illustrated on the pages that follow. FSB has diagrams and locks for all the leading makes of glass doors. The assembly procedure has in each case been gauged to match.

Fixed door knobs for glass doors

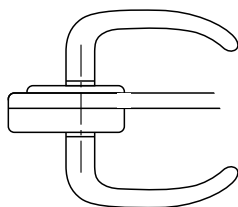
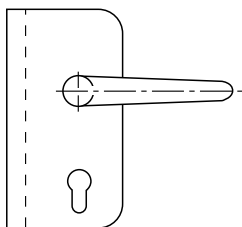
Fixed door knobs are usually fastened directly to the glass door. There is no lock in use. The knobs are coupled on site using a 12 mm threaded spindle and secured with a grub screw.

Orders

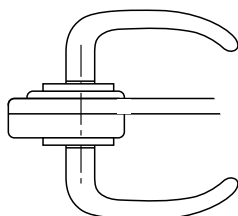
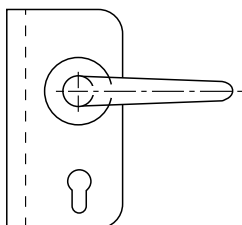
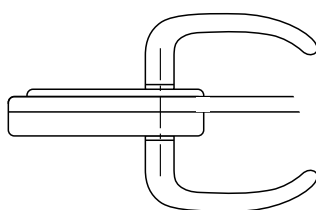
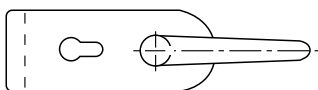
When ordering lever handles and door knobs for glass doors, it is necessary to state the make, exact type, and order number of the lock to avoid any disappointment.

Sufficient time should be allowed for any modifications that may be required. Deliveries from stock are not possible.

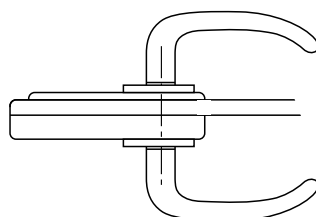
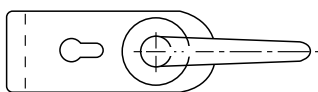
Lever handle furniture to suit glass door locks



FSB lever handle sets for use on glass doors feature modified bearings and spindle lengths (door thickness).



FSB lever handle furniture with roses can only be fitted to glass-door-locks that have been specially adapted.

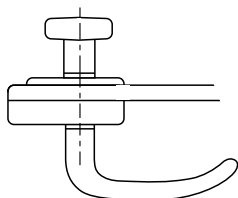
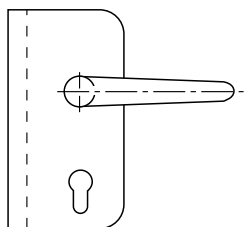


When ordering, please state lock type. We have detailed technical diagrams of the following lock types:

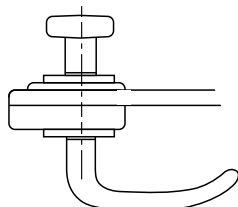
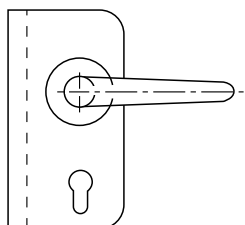
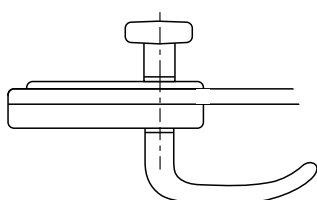
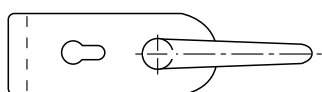
- DORMA Junior
- DORMA Junior-Office
- DORMA Studio-Rondo
- DORMA Studio-Gala
- KLARIT-Atelier-FR
- WSS-Objekta
- WSS-Studio 85
- WSS-Agency lock

Technical information page 446

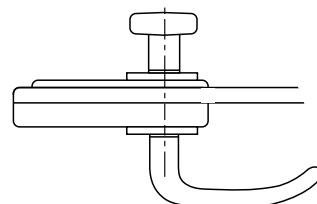
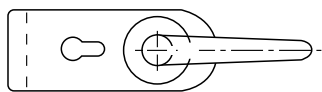
Front door furniture to suit glass door locks



FSB front door furniture with dead knob for use on glass doors feature modified bearings and spindle lengths (door thickness). Door knob is turnable.



FSB front door furniture with roses and dead knob can only be fitted to glass-door-locks that have been specially adapted.

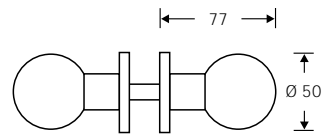
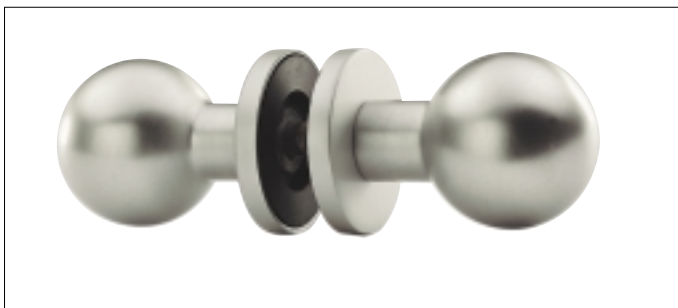


When ordering, please state lock type. We have detailed technical diagrams of the following lock types:

DORMA Junior
DORMA Junior-Office
DORMA Studio-Rondo
DORMA Studio-Gala
KLARIT-Atelier-FR
WSS-Objekta
WSS-Studio 85
WSS-Agency lock

Technical information page 446

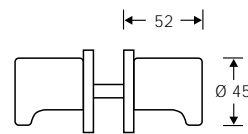
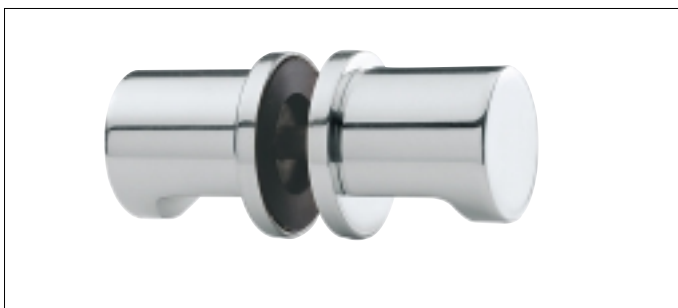
Dead knobs
for glass doors



2302 07

Aluminium
Brass
Stainless steel

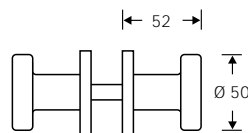
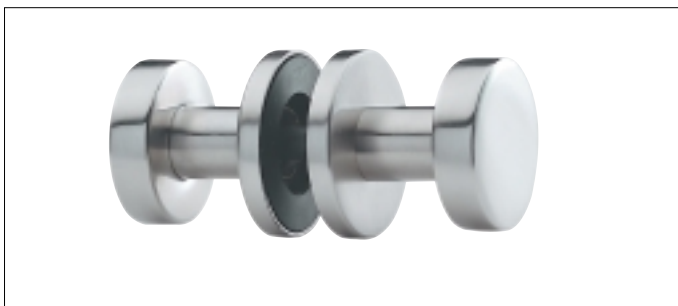
Bore hole \varnothing 13 mm



2322 07

Aluminium
Stainless steel

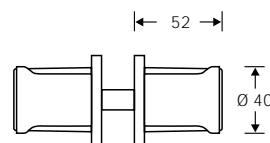
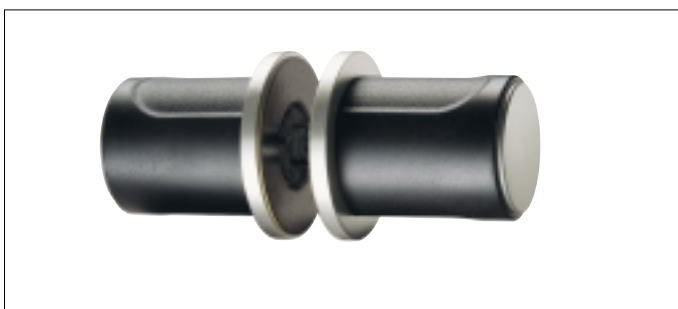
Bore hole \varnothing 13 mm



2329 07

Aluminium
Stainless steel (\varnothing 55 mm)

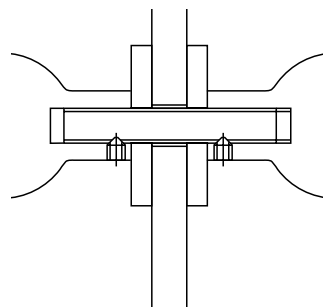
Bore hole \varnothing 13 mm



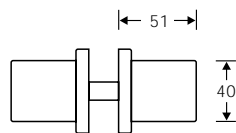
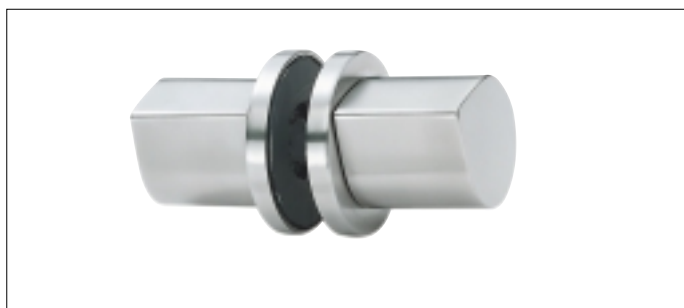
2376 07

Aluminium grey
Thermoplastics black

Bore hole 13 mm \varnothing



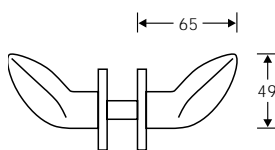
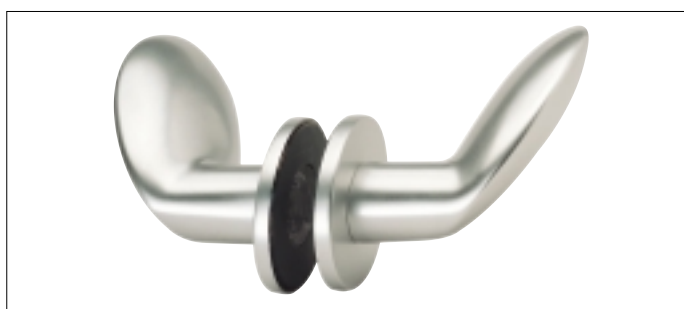
Dead knobs
for glass doors



2308 07

Stainless steel

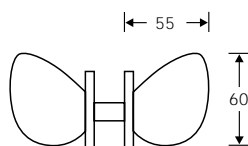
Bore hole Ø 13 mm



2326 07

Aluminium natural colour
anodised

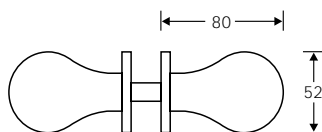
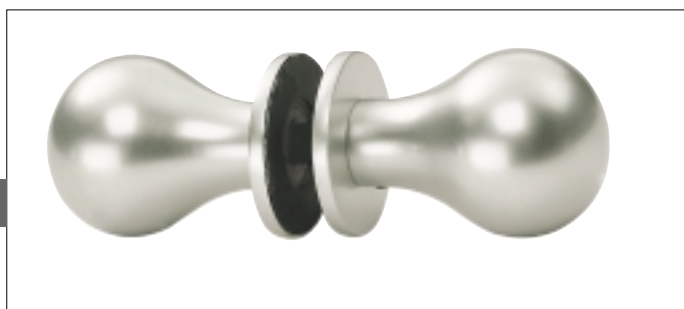
Bore hole Ø 13 mm



2339 07

Aluminium natural colour
anodised

Bore hole Ø 13 mm



2374 07

Aluminium natural colour
anodised

Bore hole Ø 13 mm

